

立版古 八王子の山車

～一本柱建て人形山車～

- ★ のりしろ
- ◇ さしこみ
- さしこみくち ※切り込みを入れる
- - - やまおり
- · - たにおり

裏面 B に貼り付け

高欄

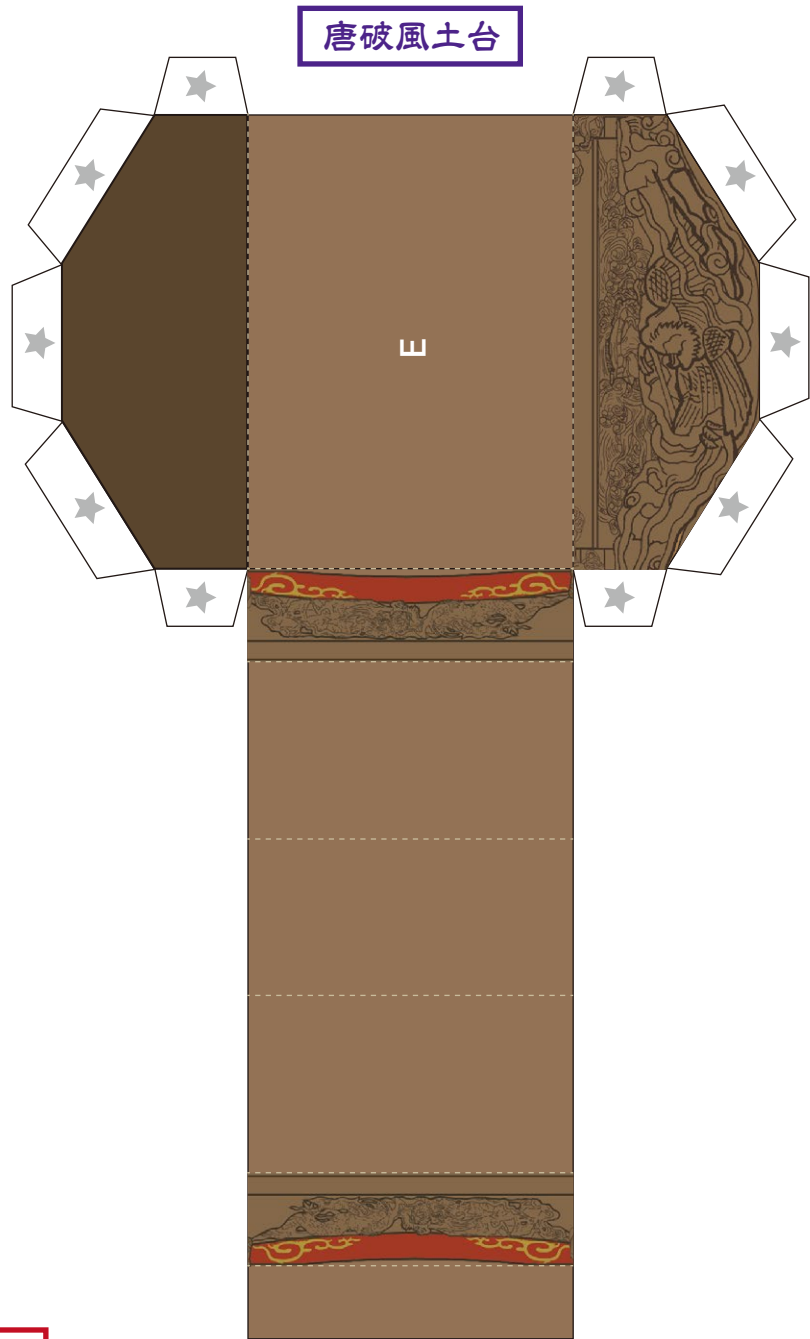
台輪

心柱

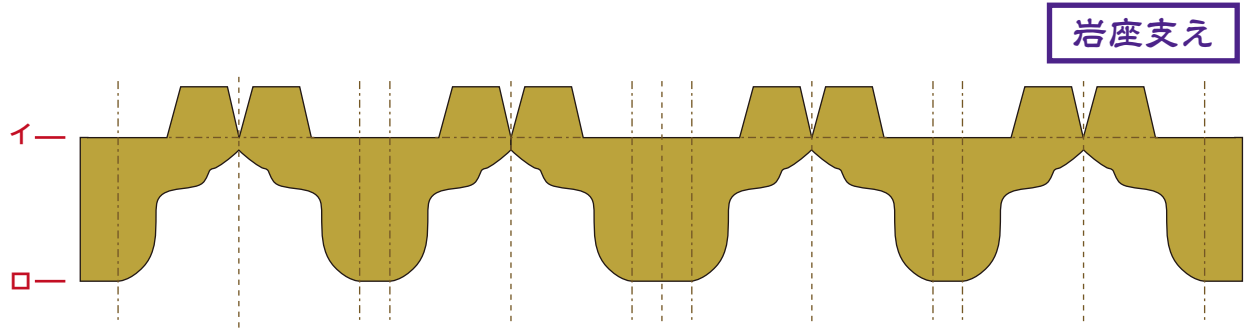


懸魚

鬼板

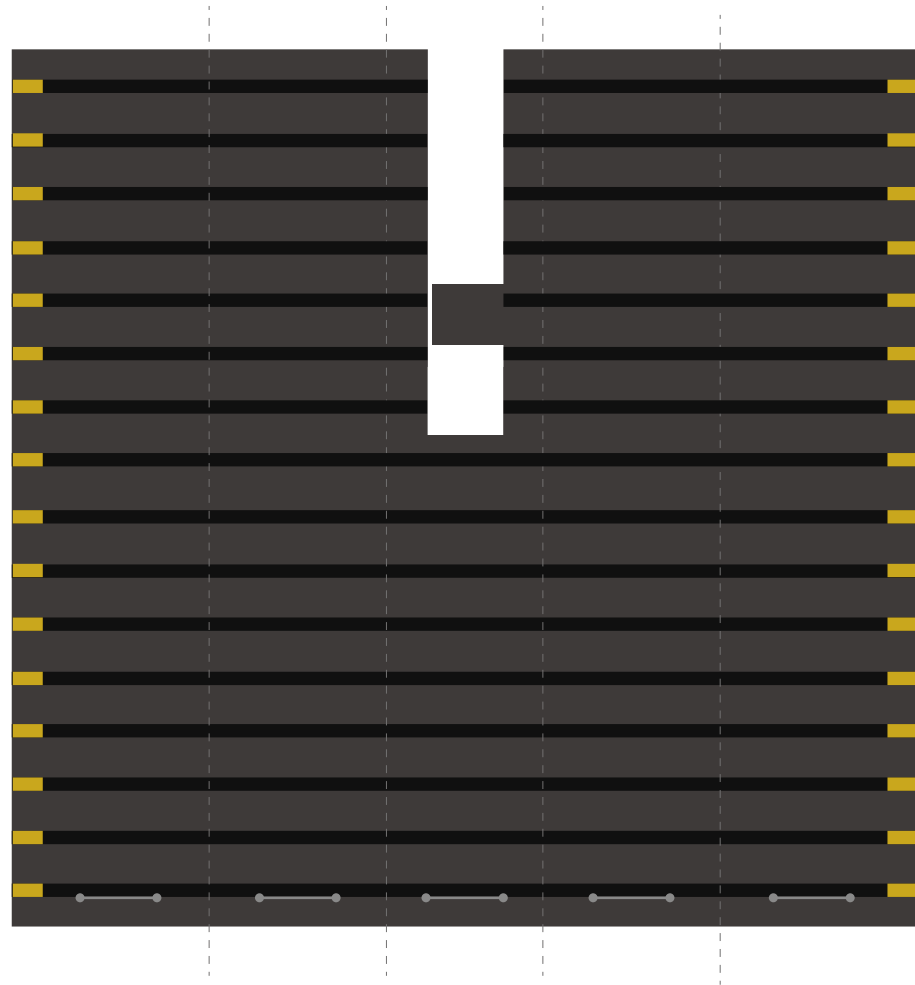


唐破風土台

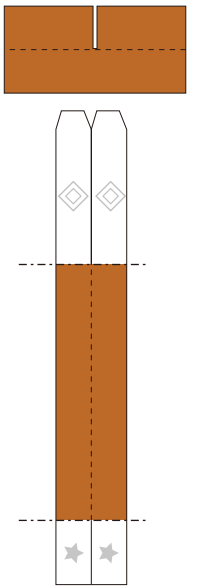


岩座支元

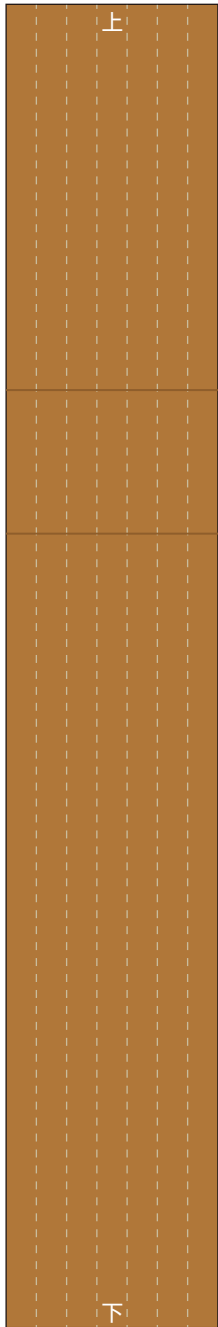
唐破風屋根



梶棒



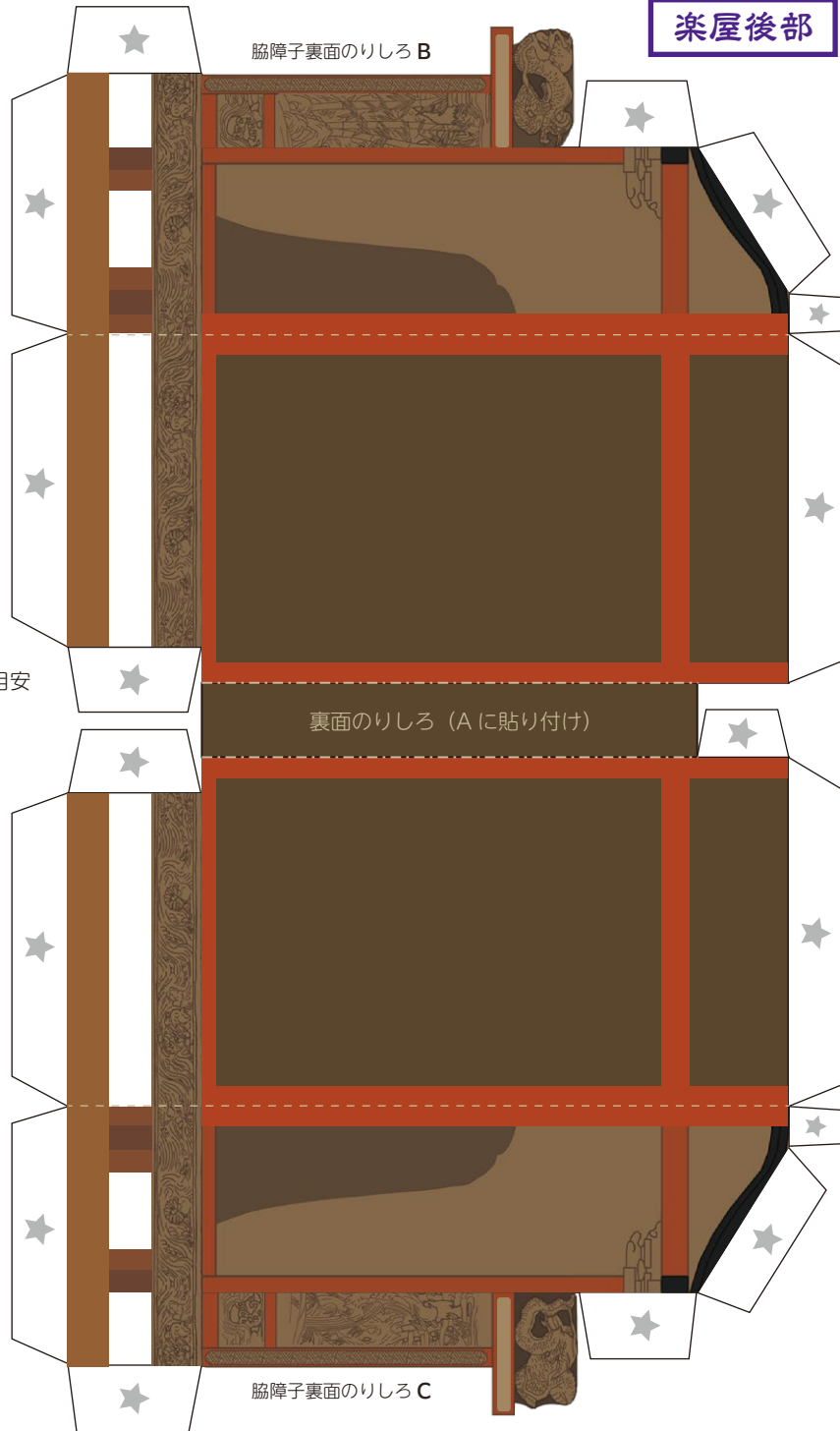
心柱



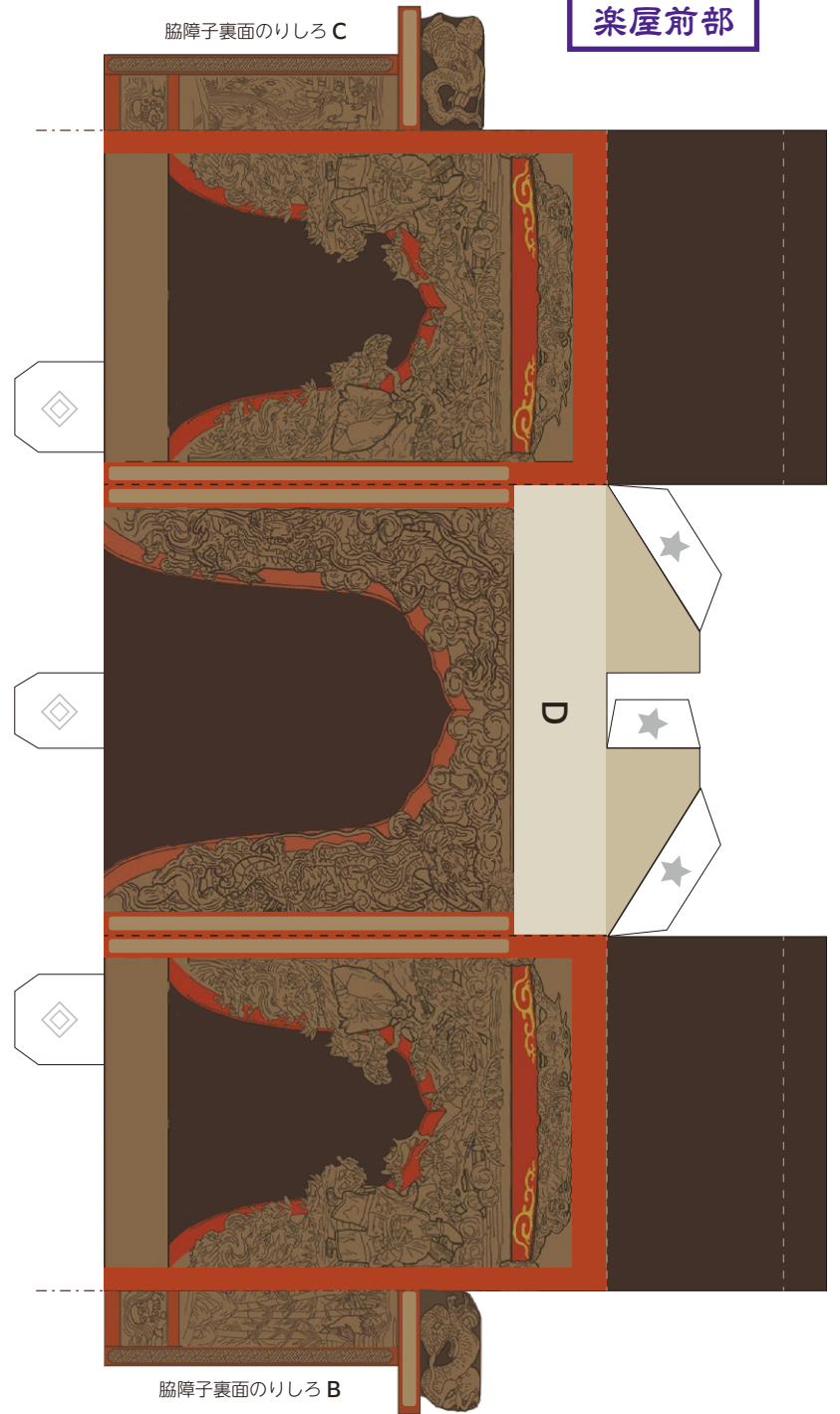
イ

□ 岩座支え
貼り付け目安

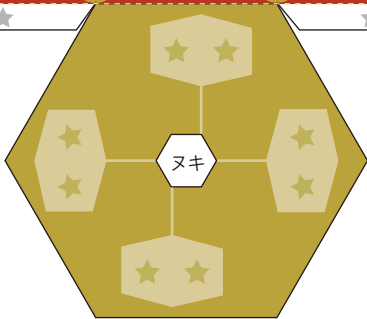
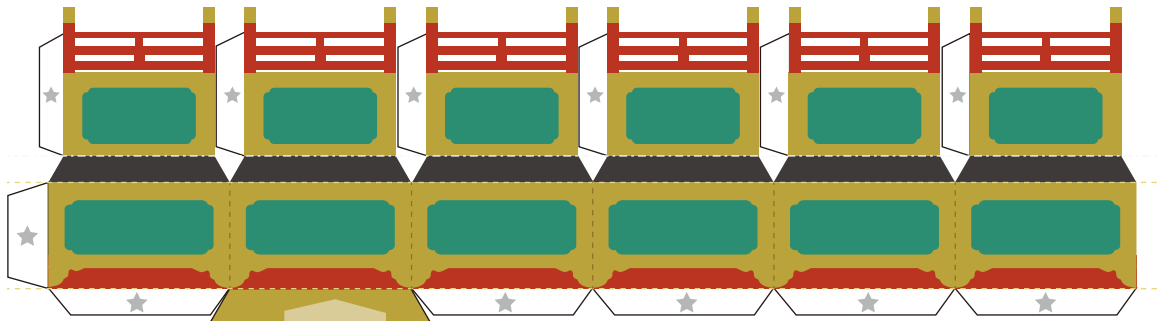
楽屋後部



楽屋前部



いわぎ
岩座

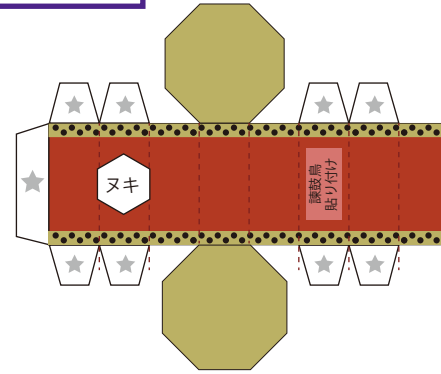


かんごどり
諫鼓鳥

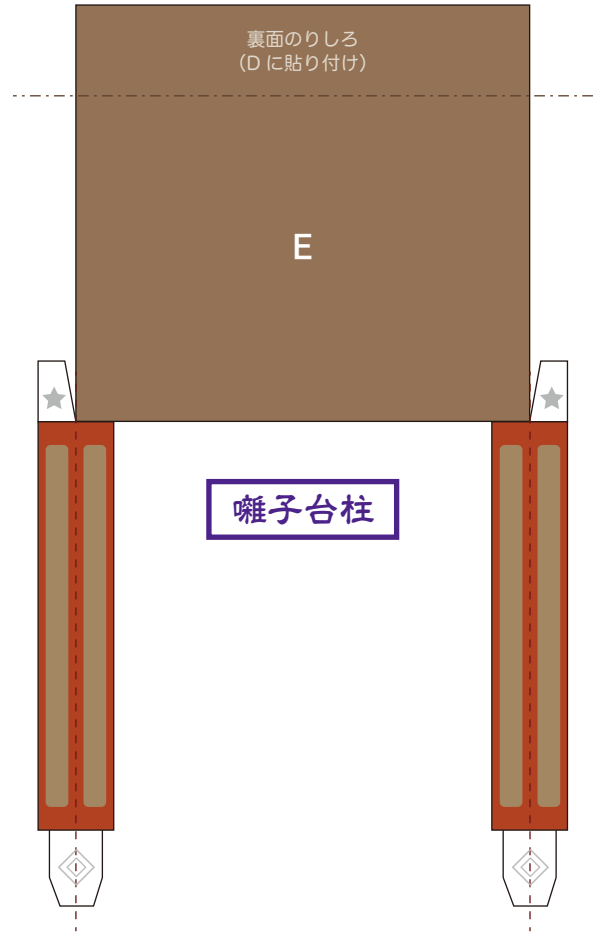
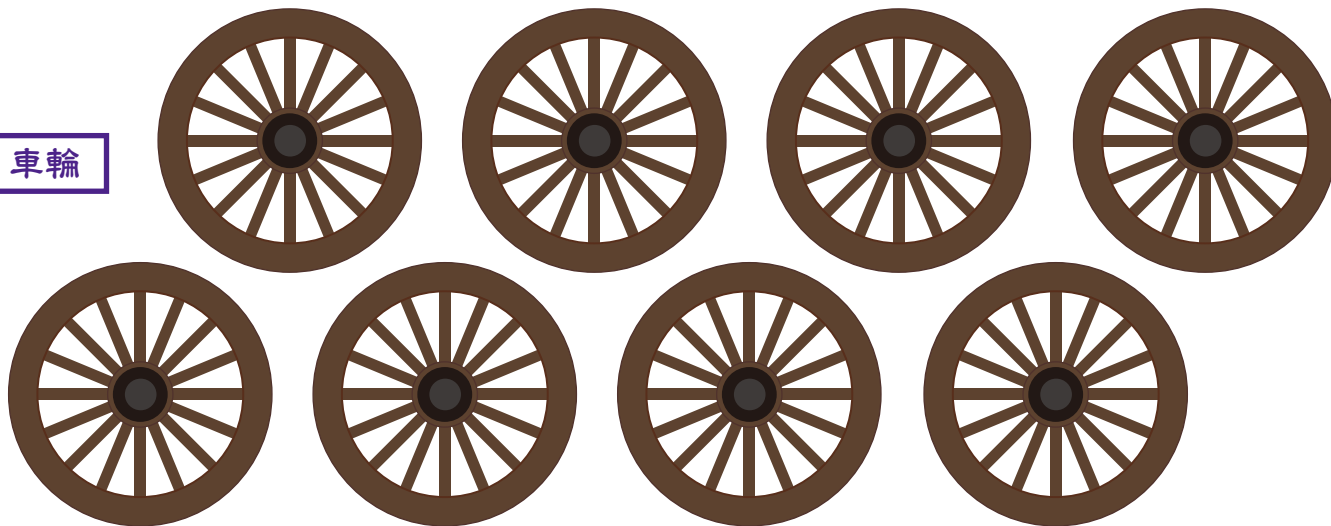


裏面のりしろ
(鳥本体の羽に貼り付け)

たいこ
太鼓



車輪



囃子台柱